

Substrate

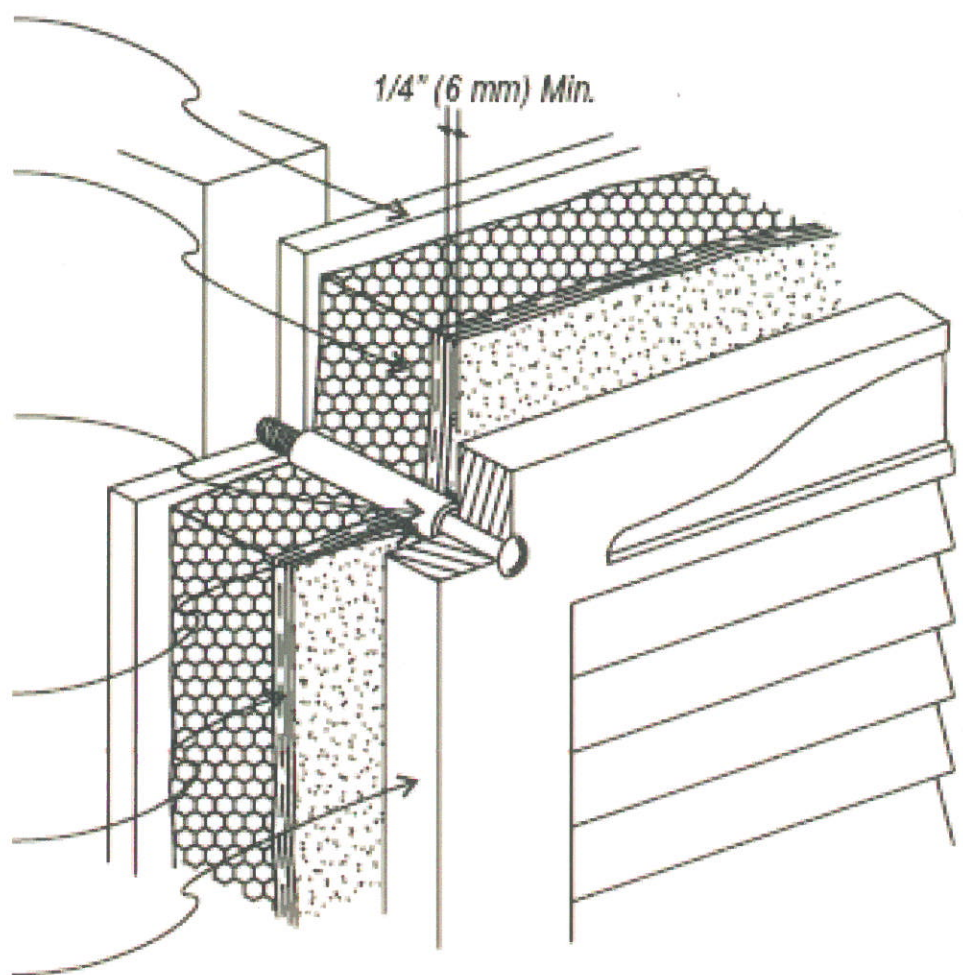
Insulation Board
Adhesively or Mechanically
Attached to Wall

Corrosion Resistant
Fastener and Sleeve Set in
Sealant Before Inserting
Fastener

Sealant Placed
Around Sleeve

Reinforcing Mesh
Embedded in Base Coat

Shutter



The architecture, engineering and design of the project using Bullseye products are the responsibility of the project's design professional. All systems must comply with local building codes and standards. This detail is for general information and guidance only, and Bullseye Wall Technology, Inc. specifically disclaims any liability for the use of this detail and for the architecture, design, engineering or workmanship of any project. The project design professional determines, in its sole discretion, whether this detail or a functional equivalent alternative is best suited for the project. Use of a functionally equivalent detail does not violate Bullseye's warranty. This detail is subject to change without notice. Contact Bullseye to insure you have the most recent version.

Bullseye Wall Technology,
Inc
145 Kelli Clark Court
Cartersville, GA 30121
P: 770.974.0766
F: 770.974.2974

BULLSEYE
WALL TECHNOLOGY, INC.

SLEEVED ATTACHMENTS - SHUTTER
ATTACHMENT

SCALE: NONE

DRAWN: AUGUST 6TH, 2008
BY: K ALEXANDER

BULLSEYE SHUTTER ATTACHMENT DETAIL 1.00